



3 Days 2 Nights Pattaya Mytt Beach Hotel Promotion

Website: <https://www.mytt hotel.com/>

Validity from 01/4 till 31/10/2019

Issued: 30/1/2019

Early Bird 30 Days: Less HK\$230 per adult by THAI Smile flights.
For more details, please refer to Air fare surcharge table.

**Air ticket + Hotel accommodation with daily breakfast
+ Roundtrip transfer**

Open in 2017, Mytt Beach Hotel is a modern, Set in the heart of North Pattaya; just a few steps away from the beach.

Room Category	Hotel Staying period	Package price <HK\$/per person 港幣價目/每位計>						Extension night with Breakfast <HK\$/per person 港幣價目/每位計>			
		Adult			Child			Twin	Single	Ex. Bed	No Bed
		Twin	Single	Ex. Bed	Twin	Ex. Bed	No Bed				
Deluxe Urban	01/4 – 31/10/19	3,450	4,250	3,190	3,090	2,690	2,090	441	882	441	117
Deluxe Ocean		3,590	4,550	3,190	3,250	2,690	2,090	513	1,026	441	117

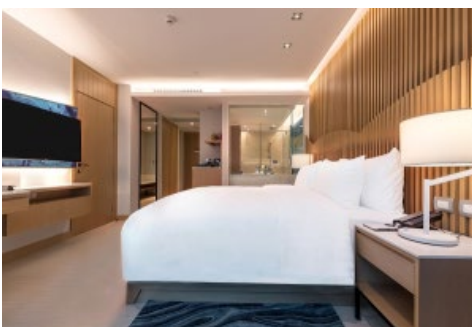
Room max. Capacity: 3 Adults / 2 Adults + 2 Children one room.

Package includes:

- Roundtrip economy class air ticket between Hong Kong and Bangkok by THAI.
- 2 Nights hotel accommodation with daily breakfast.
- Roundtrip **PRIVATE CAR** transfer between Bangkok airport and hotel in Pattaya
- 0.15% TIC Levv.

費用包括:

- 泰國國際航空來回香港及曼谷經濟客位機票乙張。
- 2晚酒店住宿連早餐。
- 曼谷機場及芭堤雅酒店**私家車**來回。
- 0.15%旅遊議會印花稅。



立即預訂 Book Now!



FLYING DREAM
TRAVEL 夢飛行旅遊
flyingdreamtravel.com
Operated by: H.C Patterson & Co Ltd
License No. : 350200

TEL : (852) **3102 2382**
EMAIL : info@flyingdreamtravel.com
Address : Room 606, 6/F, Tower 1, Harbour Centre, 1 Hok Cheung Street,
Hung Hom, Kowloon 九龍紅磡鶴翔街1號維港中心第1座6樓606室

FAX : (852) **3102 2380**
 Flying Dream Travel

Airfare Surcharge 機票附加費:

Departure date	Flight Pattern	Booking Class	Ticket Validity	Surcharge 附加費	
出發日期	航班	訂位	機票有效期	Adult 成人	Child 小童
01/4 - 17/4/19 21/4 - 04/7/19 22/8 - 30/10/19	RESREAVATION & FULL PAY must be completed before 30 days departure date.	W (GV1)	2 - 90 Days	Less100	Less 70
	HKG-BKK-HKG (Any Flight by THAI & THAI Smile)	W (GV1)		0	0
		V (GV1)	150	110	
		K (GV1)	350	260	
18/4 - 20/4/19		K (GV1)	0-1 year	900	690
		T (GV1)		1120	850
05/7 - 21/8/19	RESREAVATION & FULL PAY must be completed before 30 days departure date.	W (GV1)	2 - 90 Days	150	110
	HKG-BKK-HKG (Any Flight by THAI & THAI Smile)	W (GV1)		250	190
		V (GV1)		400	300
Discount Offer by THAI Smile Flight					
01/4 - 17/4/19 21/4 - 04/7/19 22/8 - 30/10/19	RESREAVATION & FULL PAY before 30 days departure date.	W (GV1)	2 - 90 Days	Less 230	less 170
	HKG-BKK-HKG by THAI Smile Flight only	W (GV1)		Less 140	Less 100
18/4 - 20/4/19	Applicable for TG2630 & TG6231 only	K (GV1)	0-1 year	730	560
05/7 - 21/8/19	RESREAVATION & FULL PAY must be completed before 30 days departure date.	W (GV1)	2 - 90 Days	20	20
	HKG-BKK-HKG by THAI Smile Flight only	W (GV1)		110	80
		Applicable for TG2630 & TG6231 only		V (GV1)	250
Flight TG2000-2999 are operated by THAI Smile aircrafts, Seat configuration, meal & in-flight services are different from THAI					

Remarks:

- Prices quoted are on per person basis and subject to change without prior notice.
- **Minimum 2 ADULTS** travelling together on the same flight throughout whole journey.
- Flights and room confirmation are subject to availability.
- Package is non-endorsable, non-reroutable and non-refundable.
- Amendment and cancellation is not allowed after the travel document issued.
- Hotel stay must be completed **on or before 31 Oct 2019**. For hotel stay thereafter, please contact your Travel Agent or **THAI Royal Orchid Holidays**.
- Departure taxes, Hong Kong airport security charge, airlines insurance surcharge, travel agent service fee and airlines fuel surcharge are not included.
- **Deposit payment of HK1,000 per person when making the reservation.**
- Full Payment must be pay within 2 working days after the confirmation.
- Reservation is **not accepted within 5 working days** before departure
- Package is based on Electronic Ticket (E-ticket) & Electronic Tour Voucher (E - Voucher).

備註:

- 費用均以每人計算, 費用如有調整, 恕不另行通知。
- 旅程**必須兩位成人**同時出發及同時回程。
- 所有預訂須視乎酒店及機位情況方能確定。
- 旅遊套餐在任何情況下都不能更改, 轉讓或退還款項。
- 機票及酒店出票後, 將不能更改及取消。
- 酒店住宿必須於 **2019年10月31日或之前完成**。如有任何查詢, 請與您的旅遊顧問或**皇家風蘭假期**聯絡。
- 費用不包括各地機場離境稅, 香港機場保安稅, 航空公司保險附加費, 燃油附加費及旅行社服務費。
- 訂位後, 須繳付訂金每位 HK1,000。
- 確定所有訂位後; 必須於 2 個工作天內須繳付所有款項。
- 出發前 5 個工作天不接受訂購。
- 旅遊套餐只適用於使用電子機票及電子住房券。

立即預訂 Book Now!



FLYING DREAM
TRAVEL 夢飛行旅遊
flyingdreamtravel.com
Operated by: H.C Patterson & Co Ltd
License No. : 350200

TEL : (852) **3102 2382**
EMAIL : info@flyingdreamtravel.com
Address : Room 606, 6/F, Tower 1, Harbour Centre, 1 Hok Cheung Street,
Hung Hom, Kowloon 九龍紅磡鶴翔街1號維港中心第1座6樓606室

FAX : (852) **3102 2380**
 Flying Dream Travel