



## 首爾新酒店 Hotel Crescendo Seoul 特惠 3 天 2 晚自悠行

出發日期：2019 年 8 月 5 日至 9 月 29 日

**真航空優惠：凡選乘真航空  
減成人每位 HK\$600 小童每位 HK\$200**

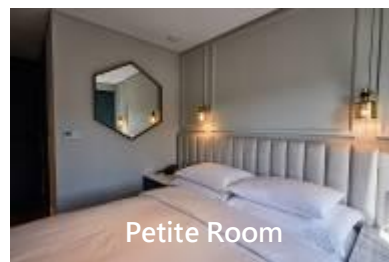
\*詳情請參考機票附加費表

**大韓航空優惠：出發日期 9 月 1 至 26 日  
減成人每位 HK\$300 小童每位 HK\$200**

銷售日期至 8 月 31 日 \*詳情請參考機票附加費表

酒店前名 The Alcove Hotel Seoul，全新裝修以歐陸式風格的精緻酒店，其餐廳提供獨特休閒而精緻的用餐體驗。酒店屋頂酒吧提供江南最佳的天際線景觀之一，與充滿活力的首爾市日常生活中的基本樂趣相得益彰。酒店對面是自然公園區，內有著名宣靖陵、奉恩寺等景點加上其周邊美麗自然景色，一年四季也有不同色彩。由其在秋季時段，也可欣賞紅葉美景。

Tour Code: J_KE_3D2NSEL_Crescendo2019_V1 Updated Date: 02-Aug-2019 Per person in HK\$/每位收費以港幣計算						
Room Type 房種	Validity 有效日期	Adult 成人			Extension Night 延長住房	
		Twin 雙人房	Single 單人房	Extra Bed 加床	Twin/Single 雙/單人房	Extra Bed 加床
Petite Room (15sqm) <DBL / TWN>	05Aug -30Sep19	<b>2590</b>	<b>3250</b>	<b>N/A</b>	750	N/A
		● Surcharge HK\$100/room/night for stay on Friday-Saturday				
Boutique King Bed (25 sqm)	05Aug -30Sep19	<b>2790</b>	<b>3690</b>	<b>N/A</b>	970	N/A
		● Surcharge HK\$180/room/night for stay on Friday-Saturday				



位於江南區，距離宣靖陵、奉恩寺和 COEX 購物商場和 COEX 水族館只需步行 15 分鐘。  
\*乘機場巴士 NO.6703 於 Ramada Hotel Seoul Station 下車步行 1 分鐘便到達酒店。  
\*乘地鐵 9 號線 Seonjeongneung 站 3 號出口，步行 3 分鐘。

### 酒店特色設施:

- 全部房間設免費 WIFI 服務、USB 插頭。
- 特設 24 小時自助式洗衣房 <免費使用>、健身室、2 間餐廳、1 間酒吧。
- 酒店大堂是設於高層 11 樓，辦理手續時也可觀賞美麗自然景色。

### Airfare Surcharge 機票附加費:

Departure date 出發日期	Jin Air Flight Pattern 真航空航班	Booking Class 訂位	Ticket Validity 機票有效期	Surcharge 附加費	
				Adult 成人	Child 小童
05/8- 29/10/19	Daily Flight HKG-SEL-HKG HKG-SEL by LJ114 13:30/18:05 SEL-HKG by LJ113 09:15/12:20	P	2 - 30 Days	-600	-200
		A		-400	0
		X		-300	100

**Booking must be made by Amadeus or contact our company**



FLYING DREAM TRAVEL  
夢飛行旅遊  
www.flyingdreamtravel.com

TEL : (852) **3102 2382** FAX : (852) 3102 2380 Flying Dream Travel  
Address : Room 606, 6/F, Tower 1, Harbour Centre, 1 Hok Cheung Street, Hung Hom, Kowloon  
九龍紅磡鶴翔街1號維港中心第1座6樓606室 (MTR station : Whampoa , Exit A)  
EMAIL : [info@flyingdreamtravel.com](mailto:info@flyingdreamtravel.com) Operated by H.C.Patterson & Co.Ltd. Licence no. : 350200

**Airfare Surcharge 機票附加費:**

Departure date	Cathay Pacific Flight Pattern HKG-SEL-HKG	Booking Class	Ticket Validity	Surcharge 附加費	
出發日期	國泰<CX>航班 香港至首爾至香港	訂位	機票有效期	Adult 成人	Child 小童
<b>&lt;Ticket issued on or before 30Sep 19&gt;</b>					
23/8 - 26/9/19	Daily Flight HKG-SEL-HKG by CX	Q	2 - 7 Days	0	0
29/9/19		N		550	420
05/8 - 22/8/19		S		950	720
05/8 - 29/9/19		S (GV2)		1160	870

**Airfare Surcharge 機票附加費:**

Departure date	Korean Air <KE> Flight Pattern HKG-SEL-HKG	Booking Class	Ticket Validity	Surcharge 附加費	
出發日期	大韓航空<KE>航班 香港至首爾至香港	訂位	機票有效期	Adult 成人	Child 小童
<b>Early Bird Promotion &lt;Ticket issued on or before 31 Aug 19&gt;</b>					
01/9 - 26/9/19	Daily Flight HKG-SEL-HKG by KE	N	2-30 Days	-300	-220
27/9/19				100	80
05/8 - 23/8/19				300	230
24/8 - 26/9/19	Reservation made 7 days before departure	Q (AP7)	2 - 30 Days	300	230
	Reservation made 3 days before departure	Q (AP7)		500	380
	Reservation made 3 days before departure within 3 Days before departure	U (AP3)	2 - 90 Days	700	530
	U	900		680	
05/8 - 23/8/19 & 27/9/19	Reservation made 7 days before departure	Q (AP7)	2 - 30 Days	900	680
	Reservation made 3 days before departure	Q (AP7)		1100	830
	Reservation made 3 days before departure within 3 Days before departure	U (AP3)	2 - 90 Days	1300	980
		U		1500	1130
28/9 - 29/9/19	Reservation made 3 days before departure	Q (AP3)	2 - 30 Days	1700	1280
	Reservation made 3 days before departure within 3 Days before departure	U (AP3)		2 - 90 Days	1900
		U	2100		1580

**Package Inclusion:**

- ▶ Roundtrip economy class Ticket Hong Kong and Seoul by Jin Air or Korean Air or Cathay Pacific.
- ▶ 2 Nights hotel accommodation (not include breakfast).
- ▶ Travel Insurance (Coverage of personal accident up to HK\$100,000).
- ▶ 0.15% TIC Levy.

**Terms & Conditions:**

- Minimum **2 Adults** travel together on the same flights throughout the journey.
- Booking must be reserved under the **SAME record locator (PNR)** for all passengers.
- Valid for Hong Kong residence only.
- **Child price Less HK\$400 based on adult price (sharing twin/extra bed).**
- **Child No Bed price from HK\$1,590.**
- No insurance coverage for child under age of 2.
- **Hotel stay must be completed on or before 30 Sep 2019.**
- Flights and room confirmation are subject to availability.
- Package is non – endorsable, non – reroutable and non – refundable.
- Prices quoted are per person basis and subject to change without prior notice.
- Hong Kong airport security charge, airlines insurance surcharge, airlines fuel surcharge, travel agent service fee and any local government taxes are not included.
- Reservation must be made at least 3 working days prior to departure.
- For reservation made within 7 working days prior to departure, a non-refundable full payment is required.
- Electronic tickets (E-ticket) must be using for the packages
- Travel Insurance Company : Chubb Insurance Hong Kong Limited .  
Tel : 31916800

**套票包括:**

- ▶ 真航空或大韓或國泰航空來回香港至首爾經濟客位機票乙張 (電子機票)。
- ▶ 2 晚酒店住宿<不包早餐>。
- ▶ 旅遊保險(人身意外最高賠償 HK\$100,000)。
- ▶ 0.15%旅遊業議會印花稅。

**條款及細則:**

- 旅程必須至少**兩位成人**同時出發及回程。
- 所有同行客人必須於**同一 PNR** 內訂位。
- 以上價錢只適用於香港居民。
- **小童價格按成人價減 HK\$400(佔半房或加床)。**
- **小童不佔床價 HK\$1,590 起。**
- 2 歲以下小童不包保險。
- **酒店住宿必須於 2019 年 9 月 30 日或之前完成。**
- 所有預訂須視乎酒店及機位情況方能確定。
- 旅遊套餐在任何情況下都不能更改, 轉讓或退還款項。
- 費用均以每人計算, 費用如有調整, 恕不另行通知。
- 費用不包括香港機場保安稅, 各地機場離境稅, 保險附加費, 燃油附加費, 旅行社服務費及任何當地政府稅項。
- 所有訂位手續須於出發前不少於三個工作天內辦理。
- 凡於出發前 7 個工作天內辦理預訂手續, 須繳付所有款項。已付之費用概不退還。
- 旅遊保險承保公司 : Chubb Insurance Hong Kong Limited .  
聯絡電話 : 31916800



**FLYING DREAM TRAVEL**  
**夢飛行旅遊**  
[www.flyingdreamtravel.com](http://www.flyingdreamtravel.com)

TEL : (852) **3102 2382**

FAX : (852) 3102 2380

Flying Dream Travel

Address : Room 606, 6/F, Tower 1, Harbour Centre, 1 Hok Cheung Street, Hung Hom, Kowloon  
 九龍紅磡鶴翔街1號維港中心第1座6樓606室 (MTR station : Whampoa , Exit A )

EMAIL : [info@flyingdreamtravel.com](mailto:info@flyingdreamtravel.com) Operated by H.C.Patterson & Co.Ltd. Licence no. : 350200